



**Making Tourism Accessible for Visitors  
who are Blind or have Low Vision**

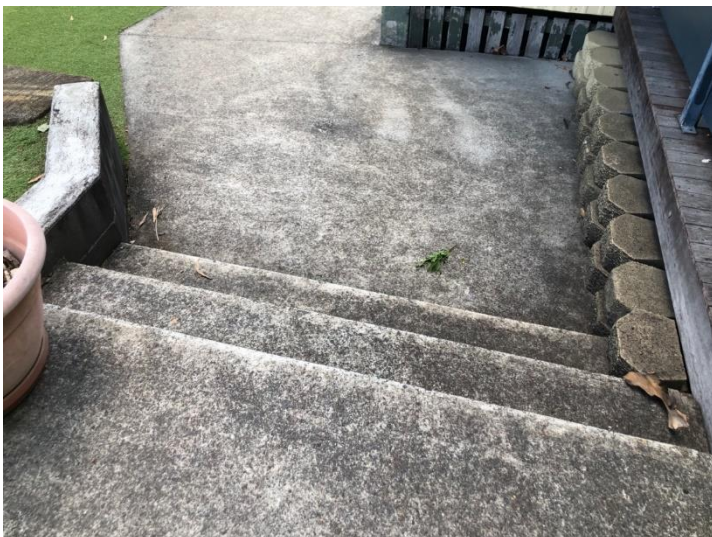
## Examples of Unsupportive Design Elements For those Who Are Blind or Have Low Vision



No contrast between concrete wheel stop or curb, and the carpark surface.



No colour-contrast between post and floor surface.



Outdoor stairs without high contrast nosings, or TGSIs





An example of a poor queuing system that projects into the space's main path of travel. However, the system illustrates good colour contrast to the surrounding floor surface.



Signage is on the door, and the door is open. No braille, and the tactile symbol is unrecognisable



Unsupportive lift signage



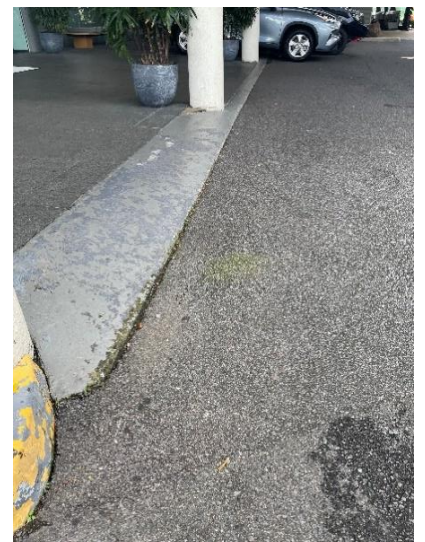
Supportive raised QR code for pub menu lacks tactile QR code indicator



Directional signage without Braille/large print



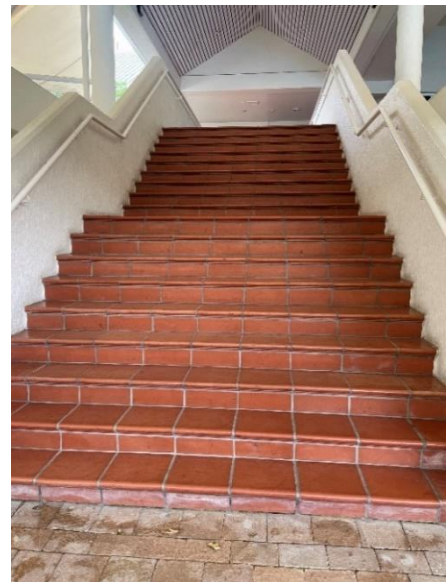
Ramp without even step / no hi-vis marking



Driveway step without hi-vis marking



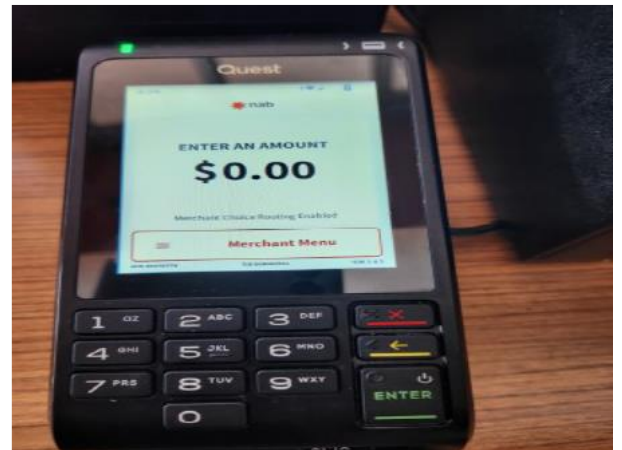
Guest room door without Braille identification



Staircase without hi-vis step markings



Menu lacks accessibility



EFTPOS not / possibly not friendly for a sight impaired user

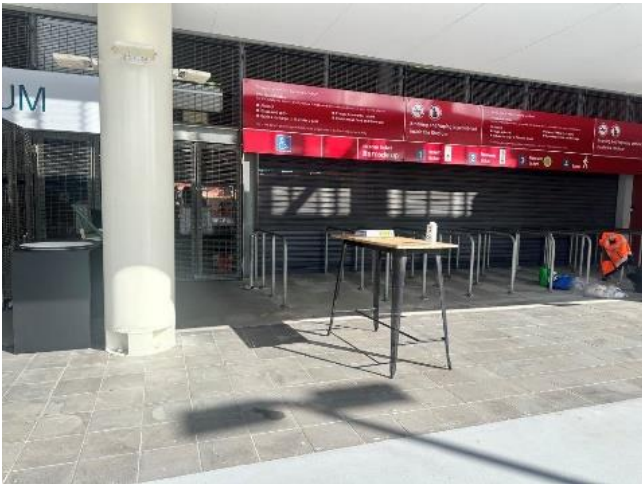




Entrance – no braille signage,  
no station for assistance



Bar – requires better signage



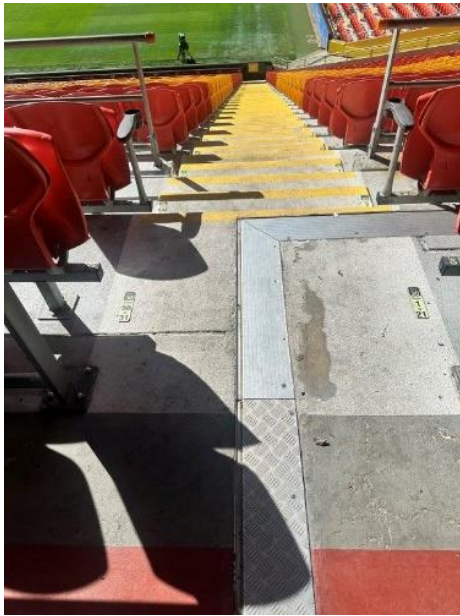
No Braille or tactile signage. No colour contrast between pole and surrounds. Table is in walkway, although this is very temporary.  
NB Image not taken on an event day.



No Braille or tactile directional signage, although what is provided is shows good colour contrast.



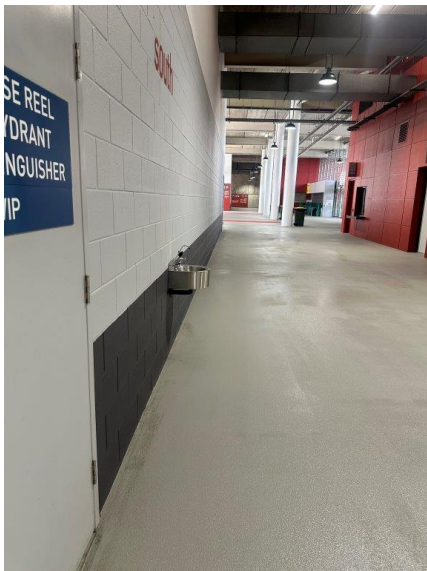
Braille signage outside lift is very extensive, however due to the amount of information and the formatting of the sign, is not height friendly for hands to read Braille.



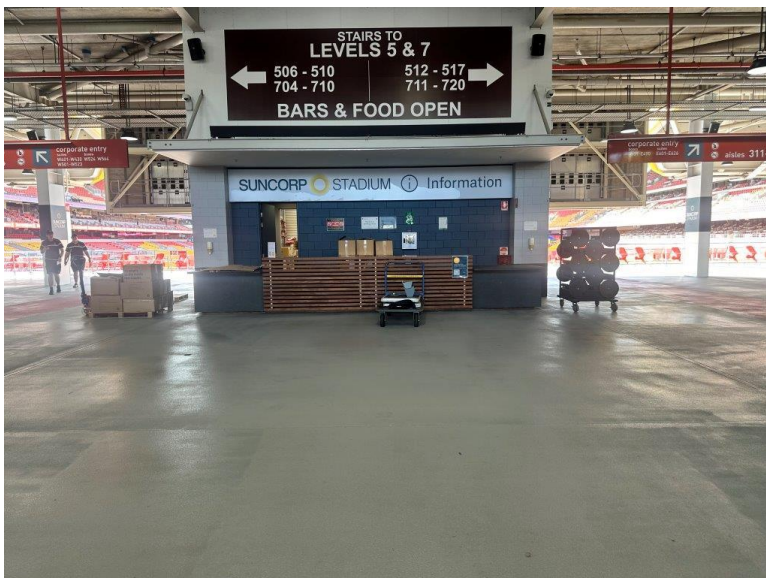
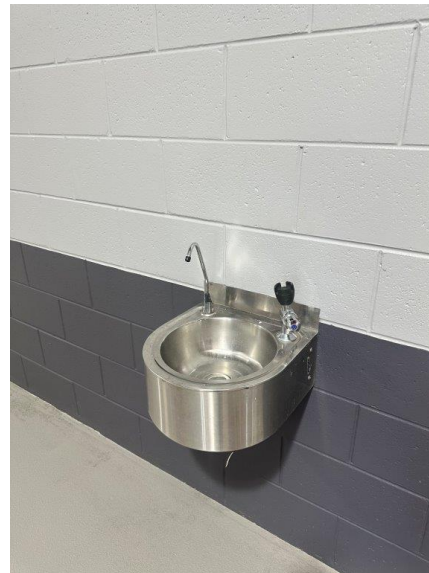
Stairs to seats have no TGSIs.



Stairs to seats would benefit from a repaint of the colour contrast. No TGSIs.



Drinking fountain along walkway juts out from wall, although colour contrast is present. There is no tactile (inc. Braille) signage.

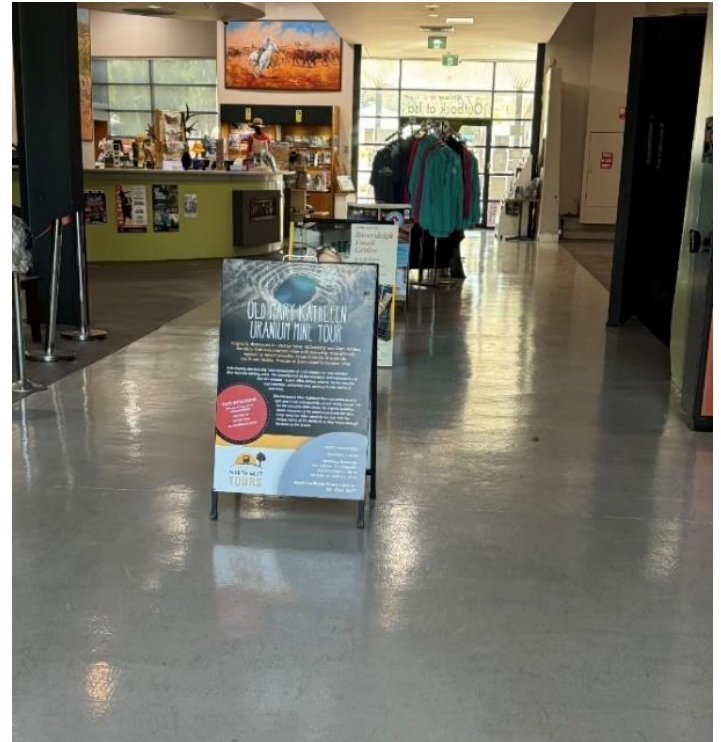


There is no tactile (inc. Braille) signage. NB Image not taken on an event day.





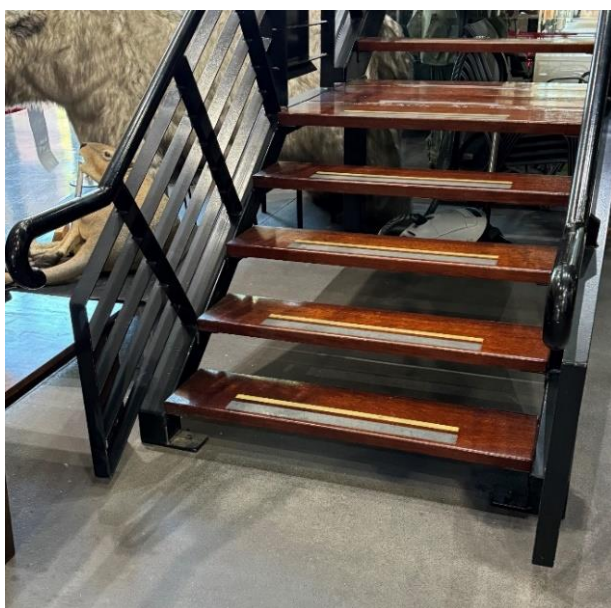
Braille signage outside lift is very extensive, however due to the amount of information and the formatting of the sign, is not height friendly for hands to read Braille.



Sandwich boards in middle of walkway



Unclear where the entry way is



Internal stairs with no tactile markers at top or bottom



No tactile markings to indicate where roadway starts and uneven ground