

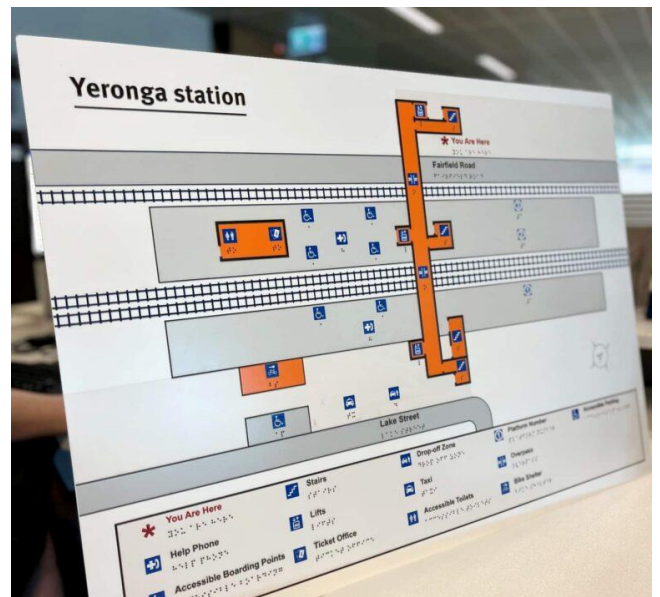


**Making Tourism Accessible for Visitors  
who are Blind or have Low Vision**

## Examples of Supportive Design Elements For those Who Are Blind or Have Low Vision



High-contrast concrete wheel stops  
in carpark



Tactile Map

<https://visualise.net.au/news/brisbane-cross-river-rail-tactile-maps/>



Photo of function area entrance –  
Tactile ground surface indicators



Outdoor assistance / dog guide relief area  
equipped with rubbish bin.

<https://www.portseattle.org/services-amenities/traveling-pets>





Large dining area is easy to move around



Good colour contrast in a public toilet



Tables have rounded corners for safety

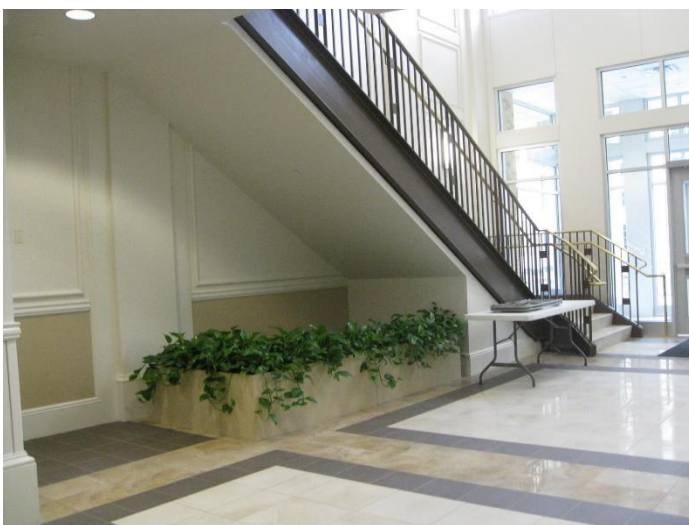


Strong colour contrast between pole and surrounds  
<https://www.westtorrens.sa.gov.au/Community/Community-arts/Stobie-pole-art>



Left: View of a hallway with high-contrast edges and doorways. Right: Simulated appearance of the same hallway while wearing the low vision goggles.

[https://www.researchgate.net/figure/Left-View-of-a-hallway-similar-to-those-used-in-the-experiment-Right-Simulated\\_fig1\\_324678520](https://www.researchgate.net/figure/Left-View-of-a-hallway-similar-to-those-used-in-the-experiment-Right-Simulated_fig1_324678520)



Planter boxes preventing collision underneath a stairway.

<http://abadiaccess.blogspot.com/2011/03/how-do-architects-deal-with-head.html>



Twin retractable banding / double belt posts can be detected by a long cane.

<https://www.barsec.com.au/products/belt-posts/double-belt-posts-portable.html>





A guidance tactile ground surface indicator consisting of elongated bars arranged in a linear pattern.



Glass door with colour contrasting strips.  
<https://sydney-signsportal.com.au/glass-safety-decal/>



Swimming pool with colour distinction instructions between water and deck



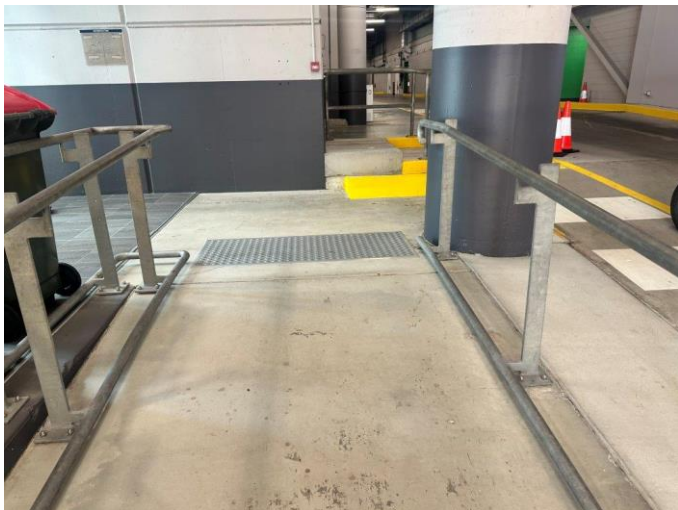
Emergency button with large print



Elevated floor with hi-vis marking



TGSI's on entry stairs

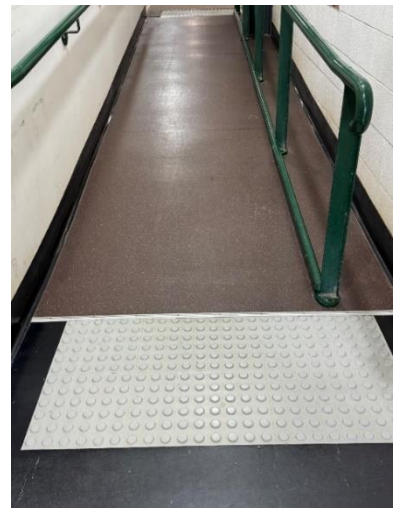


Internal ramp with handrails (and twin rails to support cane detection) and TGSI's, plus colour contrast between pole, walls and steps with surrounds



Large handles and door stickers

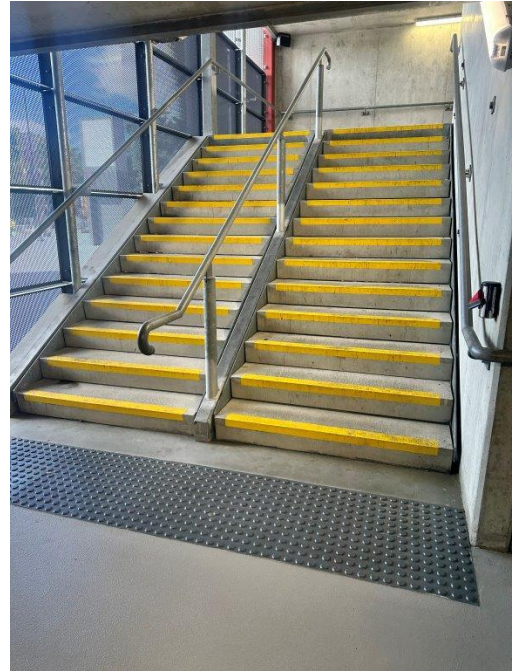
Tactile markers indicating a ramp and railings with rounded ends







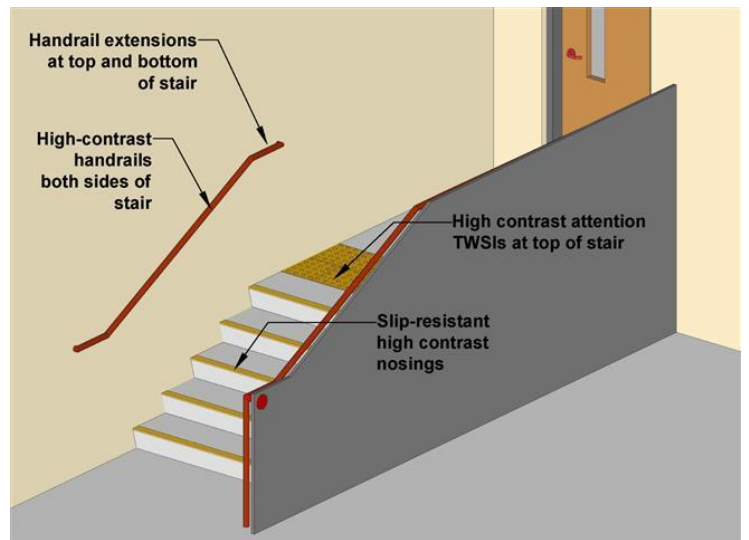
Stairs with high-contrast nosing on tread and riser, and TGSIs at the top and bottom.  
<https://www.bronsonsafety.com.au/>



Stairs with handrails and TGSIs, plus colour contrast on step treads



Tactile markers indicating stairs, as well as colour contrast stair tread strips



A drawing showing key requirements for the design of stairways that address the needs of people impacted by blindness.

<https://clearingourpath.ca/index.php/design-needs/exterior-and-interiors/stairs/>



Lift sign with braille.

<https://braillesignsupplies.com.au/braille-lift-sign/>



Elevators with Braille



Tactile (inc. Braille) internal lift buttons



Tactile (inc. Braille) lift buttons



Supportive lift signage



Supportive lift signage and handrail





Braille on signage



Braille on signage



Braille on signage



Braille toilet signage



Braille toilet signage



Toilet / shower sign with Braille